

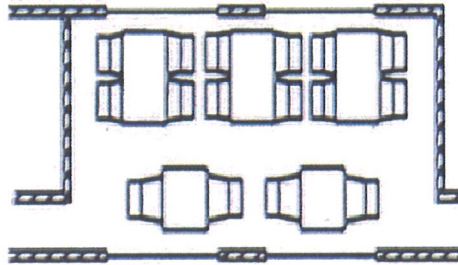


by ORIENT-EXPRESS

THE ROYAL SCOTSMAN
MANUAL PART 1
THE TRAIN



Victory Dining Car



STATE CABINS

The Royal Scotsman has 14 twin, 2 double and 4 single cabins on board, each with single beds (with the exception of the doubles), dressing table, full-length wardrobe, hairdryer, electrically controlled heating, cooling electric fans, opening windows and an electric call button. Each cabin has its own private bathroom with shower, washbasin and toilet. Showers can be used at any time, whether the train is moving or stationary.

The beds are furnished with two foam, hypoallergenic pillows and one hypoallergenic duvet with cotton quilted bed covers. Feather pillows are available if requested prior to departure.

State Twin Cabins have luggage storage space under each bed that is 28" (710mm) wide x 9" (230mm) high, however State Single Cabins have no luggage storage space under the bed.

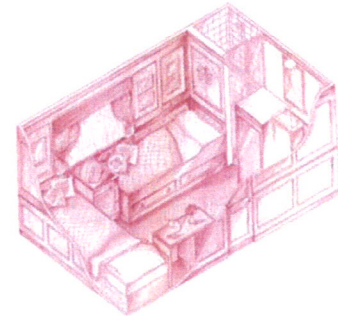
There are electrical outlets in all cabins on board The Royal Scotsman. Electricity in the United Kingdom runs 220/240 volts. If guests bring electrical appliances, they should bring an international converter kit complete with a set of adapter plugs.

Each cabin has its own lock and key, and there is a lockable drawer inside the dressing table for small items.



State Twin/Double Cabins

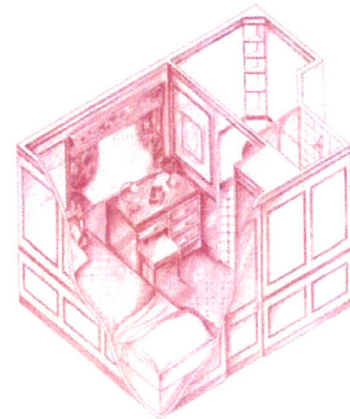
Cabin Dimensions	85 sq ft	7.90m ²
Bathroom Dimensions	24 sq ft	2.23m ²
Wardrobe Dimensions	5 sq ft	0.46m ²
Bed Length (across train)	6ft 1in	1.85m
Bed Length (under window)	6ft 3in	1.90m
Extra Long Bed Length (cabins O, P, Q)	6ft 8in	2.03m
Cabins S & T have one double bed of	6ft 3in	1.90m
Bed Width (all twins)	2ft 4in	0.73m
Bed Width (doubles)	4ft 6in	1.37m



*State Twin Cabin
85 sq. ft.*

State Single Cabins

Cabin Dimensions	55 sq ft	5.1m ²
Bathroom Dimensions	15 sq ft	1.4m ²
Wardrobe Dimensions	3.5 sq ft	0.34m ²
Bed Length	6ft 2in	1.89m
Bed Width	2ft 4in	0.73m



*State Single Cabin
55 sq. ft.*

Corridor

Width	2ft	0.60m
-------	-----	-------